

Help Document for Peter McDonald's Anthology CD: "PeteMcDonald-MP3"

For Windows versions 95/98/ME/2000/XP/Vista

The "PeteMcDonald-MP3" CD has been developed for and tested on all of these operating systems and found to install and operate as intended. If you experience any difficulties please read this document thoroughly before contacting the artist or the [developer](#) of the program. **NOTE:** Vista may require you to "allow access" to the program. It is safe to do so.

1. Insert CD in the appropriate drive of your computer. If the computer's autorun function is enabled (the default setting on most systems; see page 2 for more info), the disk will begin to spin and after a moment, a dialogue box to introduce the CD will appear on your screen (*Figure 1*).

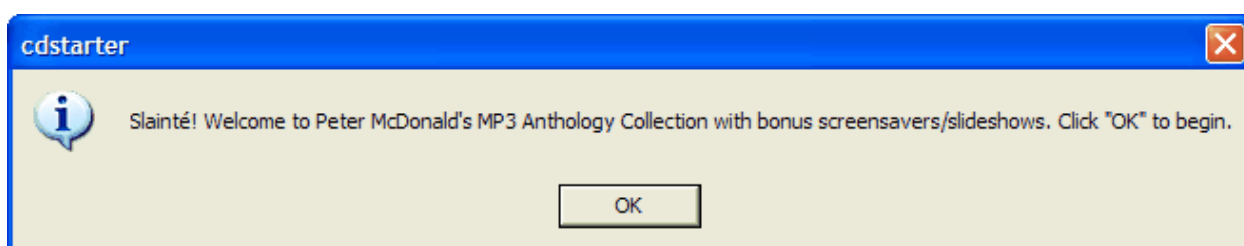


Figure 1

2. Click the OK button to continue loading the CD menu dialogue box (*Figure 2*). Click on any menu item to complete the stated task. (Please allow a moment for the computer to respond to your command). Follow the on-screen directions to complete each choice.

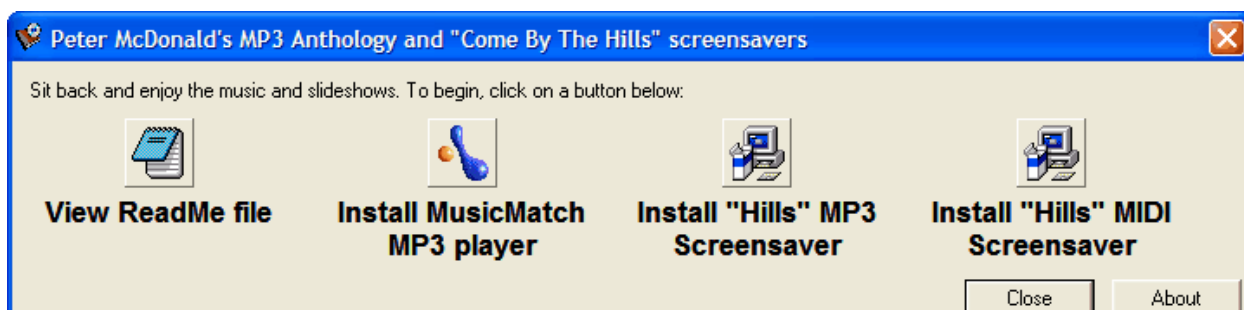


Figure 2

Your Anthology CD should now be installed.

NOTE:

You do not have to install any programs in order to access the files. See next page.

If **auto-run** is disabled, or you want to bypass the automatic menu system and access the CD files directly, use one of the following two methods:

- A. **Windows Explorer:** Insert the CD in the appropriate drive. Open Windows Explorer, navigate to the CD drive in the left-hand pane and click the “plus” sign (+) prefix to “PeteMcDonald-MP3” (*Figure 3*). You can then access each file directly from the right-hand pane.

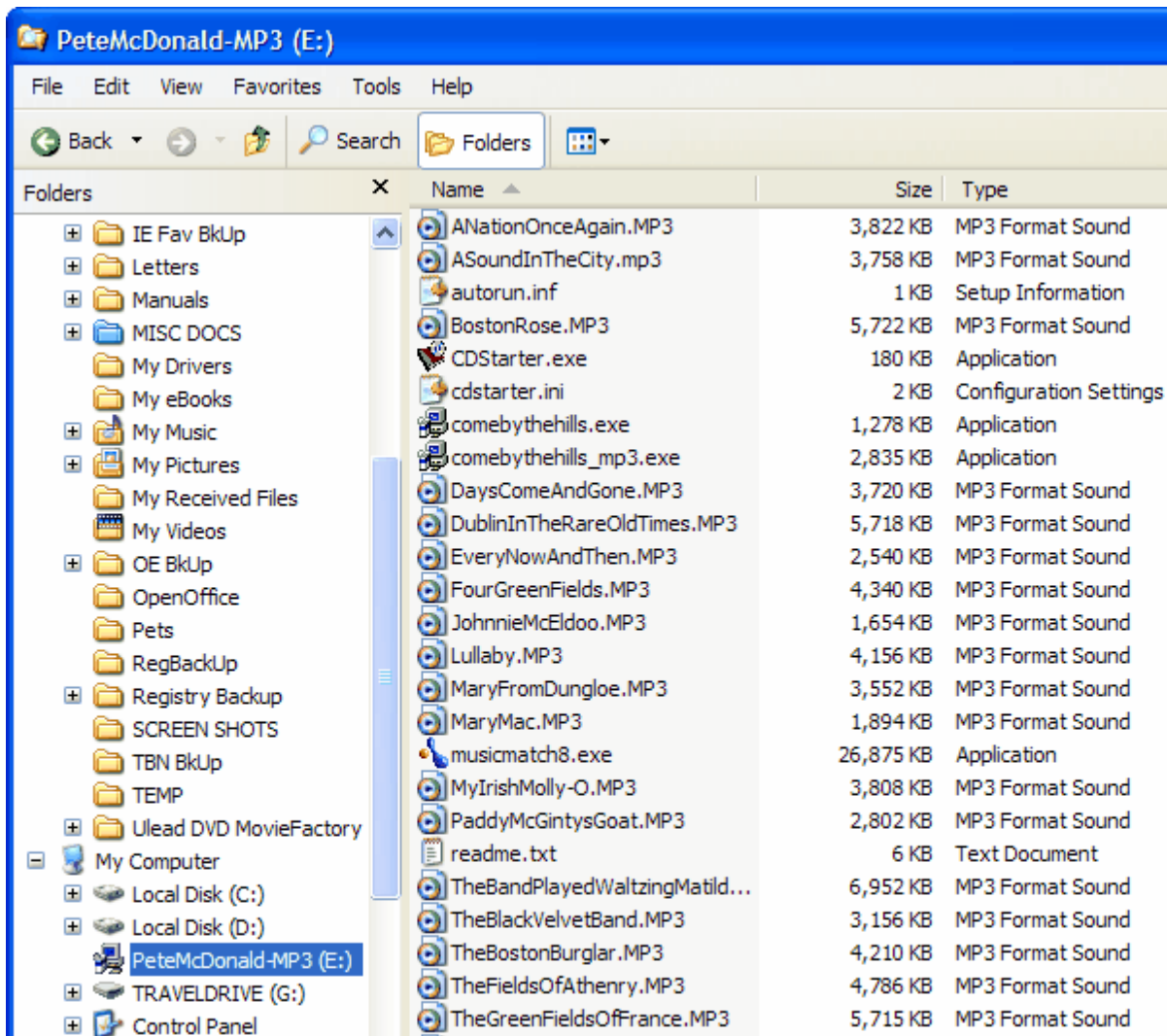


Figure 3

- B. **My Computer:** Insert the CD in the appropriate drive. Open My Computer, right-click on “PeteMcDonald-MP3” and select the Explore option from the context menu. (*Figure 4*). The list of individual files will then appear on the screen (*Figure 5*).

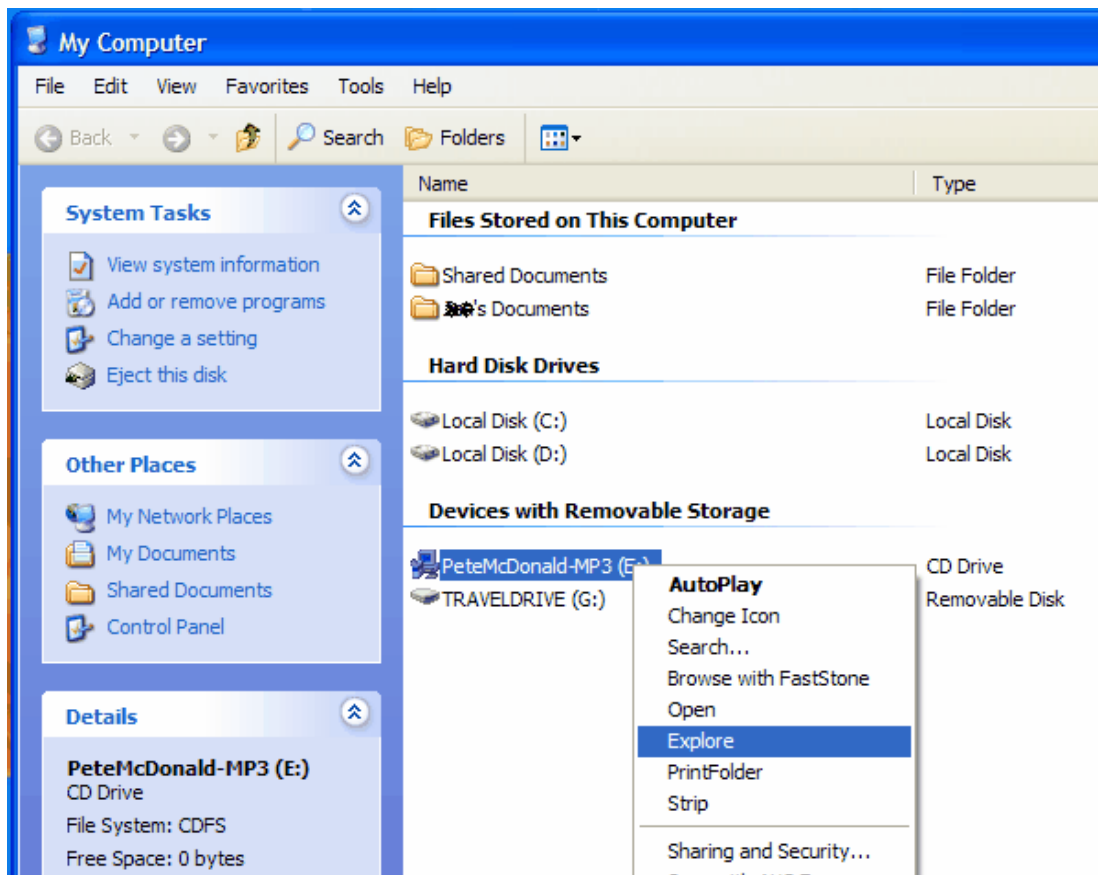


Figure 4

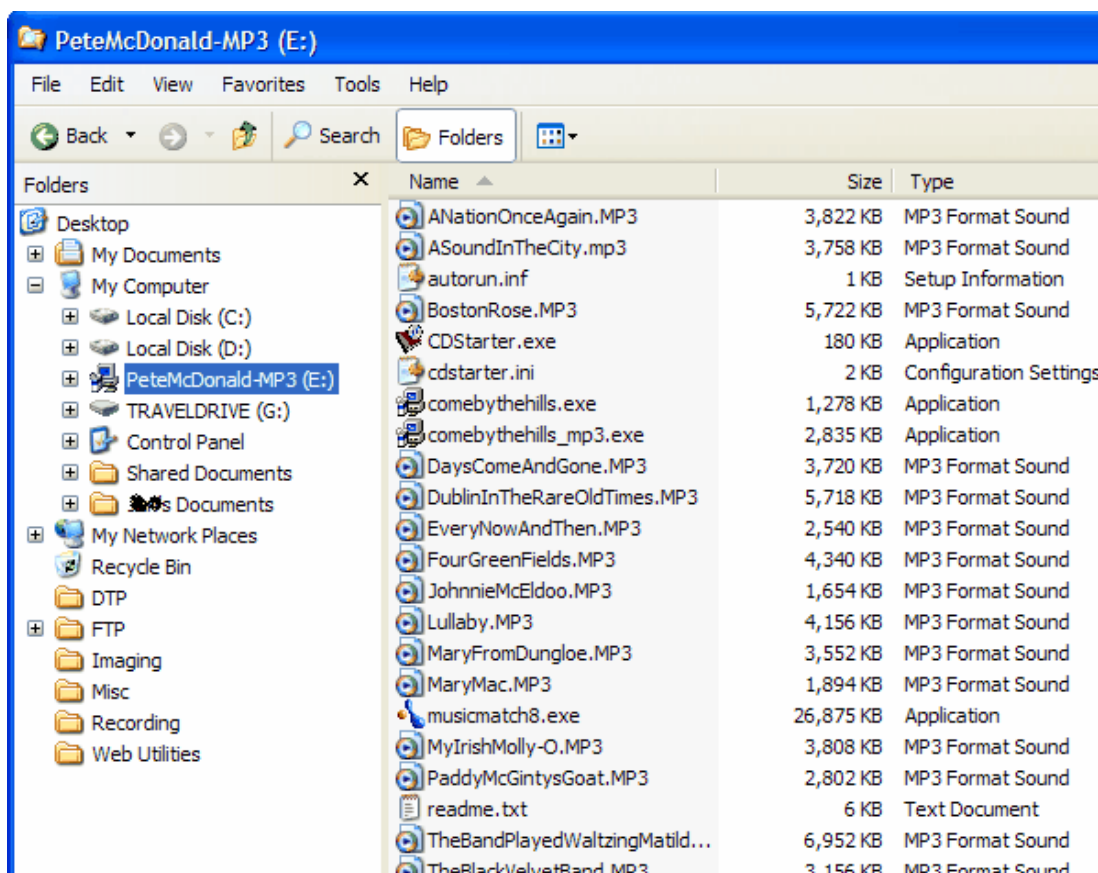


Figure 5

If, after following this guide, you are still experiencing difficulty accessing the MP3 files and/or the screensavers, you may send a Help Request email to the developer at webmaster@petemcdonald.com. Please describe the issue in as much detail as you can and include the following information:

- Operating system
- Available space on hard drive
- Amount of RAM

A step-by-step description of what happened, and screen shots if possible, are very helpful in diagnosing the problem.

This document was created on 4 April 2007 for distribution with Peter McDonald's MP3 Anthology CD. It is also available for download at <http://www.petemcdonald.com/music.html>.